

GDF SUEZ Energy Romania
Customer Success Story

AutoCAD® Map 3D Enterprise
Autodesk® Infrastructure Map
Server
Autodesk Consulting

After extensive research, we selected AutoCAD Map 3D Enterprise as the best software to manage our network across all of our central and regional offices in Romania. We also began working closely with Autodesk Consulting to ensure the smooth operation of our asset management system.

—GDF SUEZ Energy Romania

A new way of working.

GDF SUEZ Energy Romania uses Autodesk software to manage a 17,000 kilometer gas pipeline.

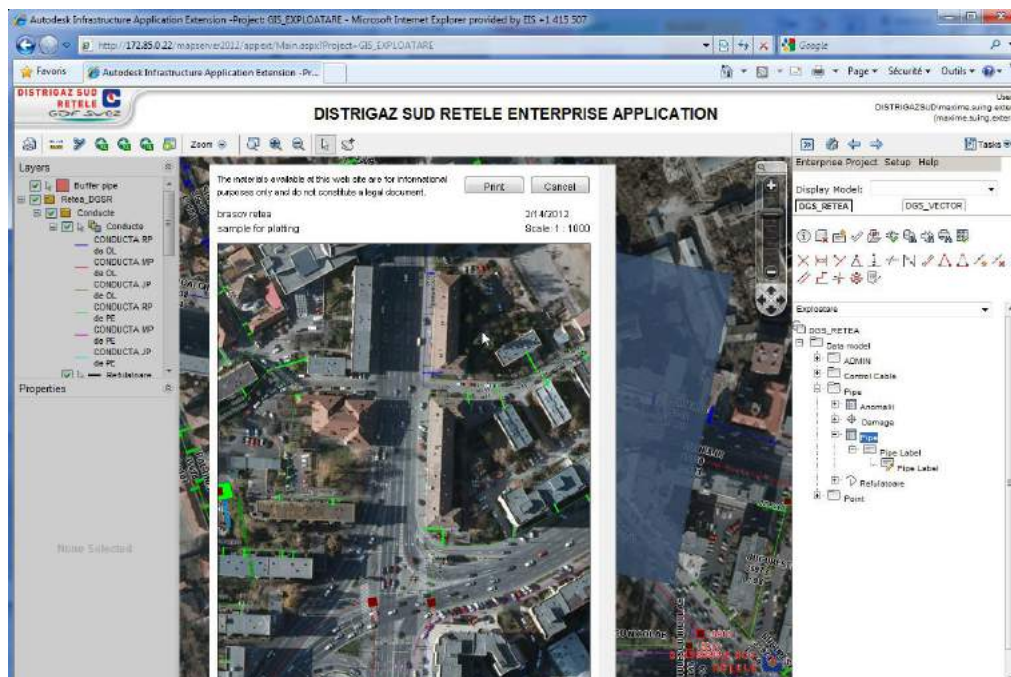


Image courtesy of GDF SUEZ Energy Romania.

Project Summary

Headquartered in Bucharest, GDF SUEZ Energy Romania is that country's arm of global energy supplier GDF SUEZ Group, the number one company in the utilities sector worldwide. In Romania, GDF SUEZ Energy Romania is a market leader in the natural gas sector, supplying natural gas to over 1.4 million consumers in 18 counties, all through an immense and intricate pipeline covering 17,000 kilometers, mostly in the southern part of the country.

In 2007, GDF SUEZ Energy Romania embarked on the creation of a new and more efficient network for the natural gas pipeline. Initiated from scratch and managed with the company's internal resources and equipment, the collection of field data related to the pipeline distribution would take two years to complete and would be contained within a single, centralized database.

The 20-member team made extensive use of AutoCAD Map 3D Enterprise, created a web platform on Autodesk Infrastructure Map Server, and worked closely with Autodesk Consulting to create the best and safest asset management system possible.

The Challenge

A necessarily highly regulated activity, natural gas distribution on such a large scale is a highly detailed and complex task. A pervasive network of gas pipes, residential connections, regulator stations, management systems, and sensors, the 17,000 kilometer network requires highest-level efficiency and automation of manual assets.

"GDF SUEZ Energy Romania provides a vital service on a massive scale, so it is of the utmost importance that we are constantly ensuring maximum efficiency of our systems through frequent updates to the latest technology, all while maintaining reliable service to over one and a quarter million customers," says Radu Negoita, Senior GIS Specialist at GDF SUEZ Energy Romania. "Beginning in 2007, the company spent two intensive years acquiring the precise field data necessary for creating the most efficient system of ongoing analysis and maintenance. By 2009, after extensive research, we selected AutoCAD Map 3D Enterprise as the best software to manage our network across all of our central and regional offices in Romania. We also began working closely with Autodesk Consulting to ensure the smooth operation of our asset management system."

The solution allows GDF SUEZ Energy Romania to safely manage asset updates across the production environment.

GDF SUEZ Energy Romania's plan was based on minimizing errors wherever possible, and quickly handling necessary corrections and exceptions on the network through a geospatial asset management system based on SAP technology. With an ambitious project implementation timeline of just ten months to complete developing and implementing business requirements analysis; a massive database requiring data migration and testing; an intricate gas network model; both software and hardware architecture; and extensive training, the GDF SUEZ Energy Romania team had not a moment to lose.

The Solution

Despite the tight timeline, and with help from a five-member Autodesk Consulting team, GDF SUEZ Energy Romania created, implemented, and deployed the new network system by 2010, and it is now successfully supporting more than 600 active users. Through the latest version of AutoCAD Map 3D Enterprise software, the core, open architecture database uses accurate data to safely and securely manage important asset updates across the entire Romanian production environment.

Thanks to the open architecture, full integration with SAP plant maintenance, network analysis, and other enterprise systems is possible, while enabling creation and interactive revisions of design drawings and providing multi-criteria analysis for investment planning. The AutoCAD Map 3D Enterprise-driven system is also used for acquiring updated field data and creating new assets and analyses. Meanwhile, the web client—based on Autodesk Infrastructure Map Server—serves the entire operation in providing a detailed view into network geometry and characteristics, as well as easier map navigation of maps and generation of reports. The system also automates and enables data capture, field measurement, network topology, job estimating, graphical reporting, and network monitoring tools.

Indeed, the system has been working so well that GDF SUEZ Energy Romania is already planning for future enhancements and developments of the system which will include such features as the development of tracking tools for new investment projects, supervisory control and data acquisition (SCADA) integration, SAP asset accounting, routing and proximity modules, workforce management, and further enhancements like Autodesk Mobile Viewer.

“Throughout this successful implementation, Autodesk Consulting was a key and vital contributor,” says Negoita. “Thanks to the Consulting team’s proactive approach, methodology and top-quality delivery, we were able to determine the most efficient strategy to take full advantage of the technology. It has been a true pleasure to work with the Autodesk Consulting team and we look forward to continuing that relationship in the future.”

To learn more about Autodesk Consulting, visit www.autodesk.com/consulting.



Image courtesy of GDF SUEZ Energy Romania.



Image courtesy of GDF SUEZ Energy Romania.

“Thanks to the Consulting team’s proactive approach, methodology and top-quality delivery, we were able to determine the most efficient strategy to take full advantage of the technology. It has been a true pleasure to work with the Autodesk Consulting team and we look forward to continuing that relationship in the future.”

—GDF SUEZ Energy Romania